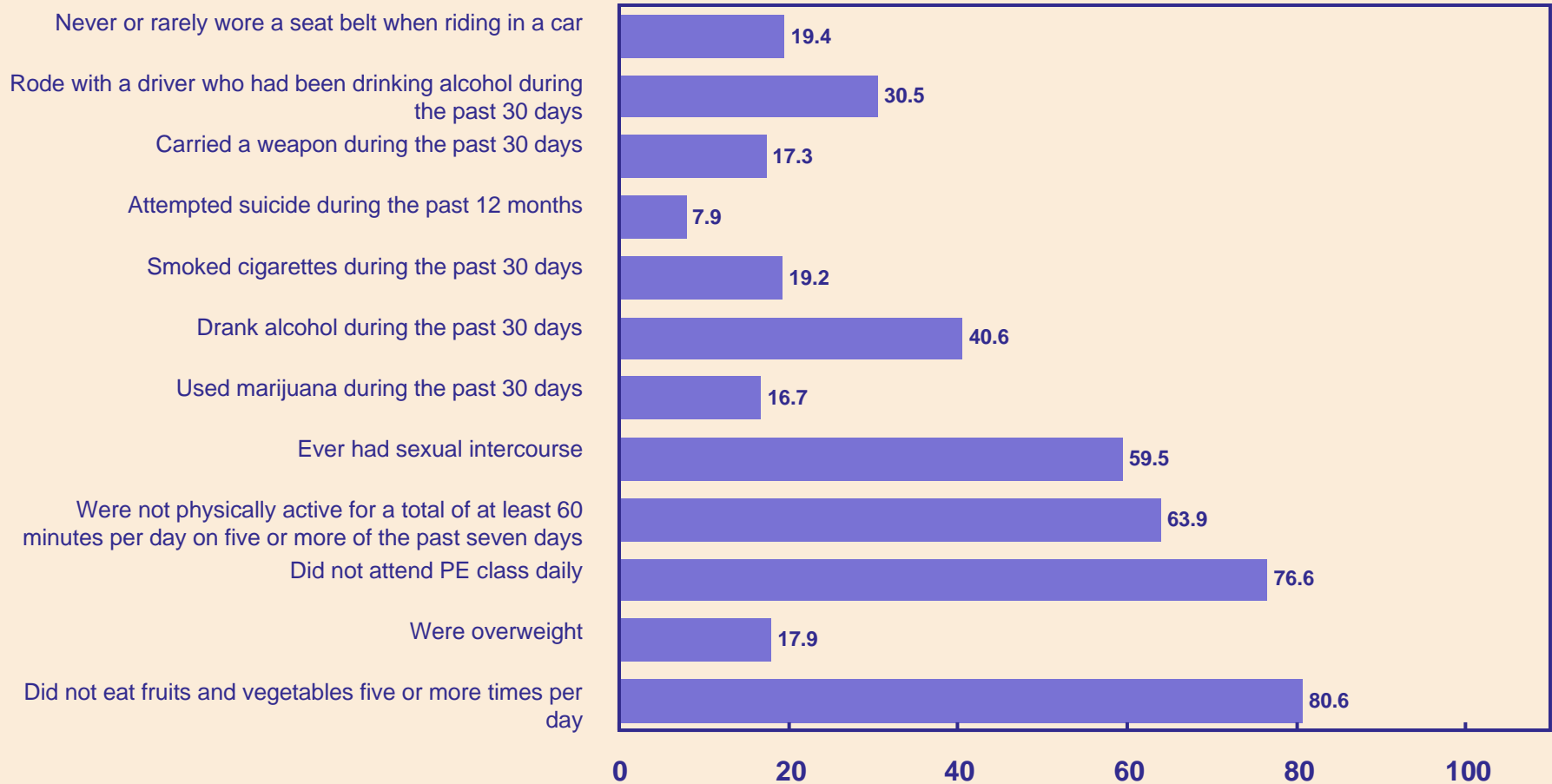


2007 Youth Risk Behavior Survey Results

Mississippi High School Survey Summary Graphs

Percentage of students who:

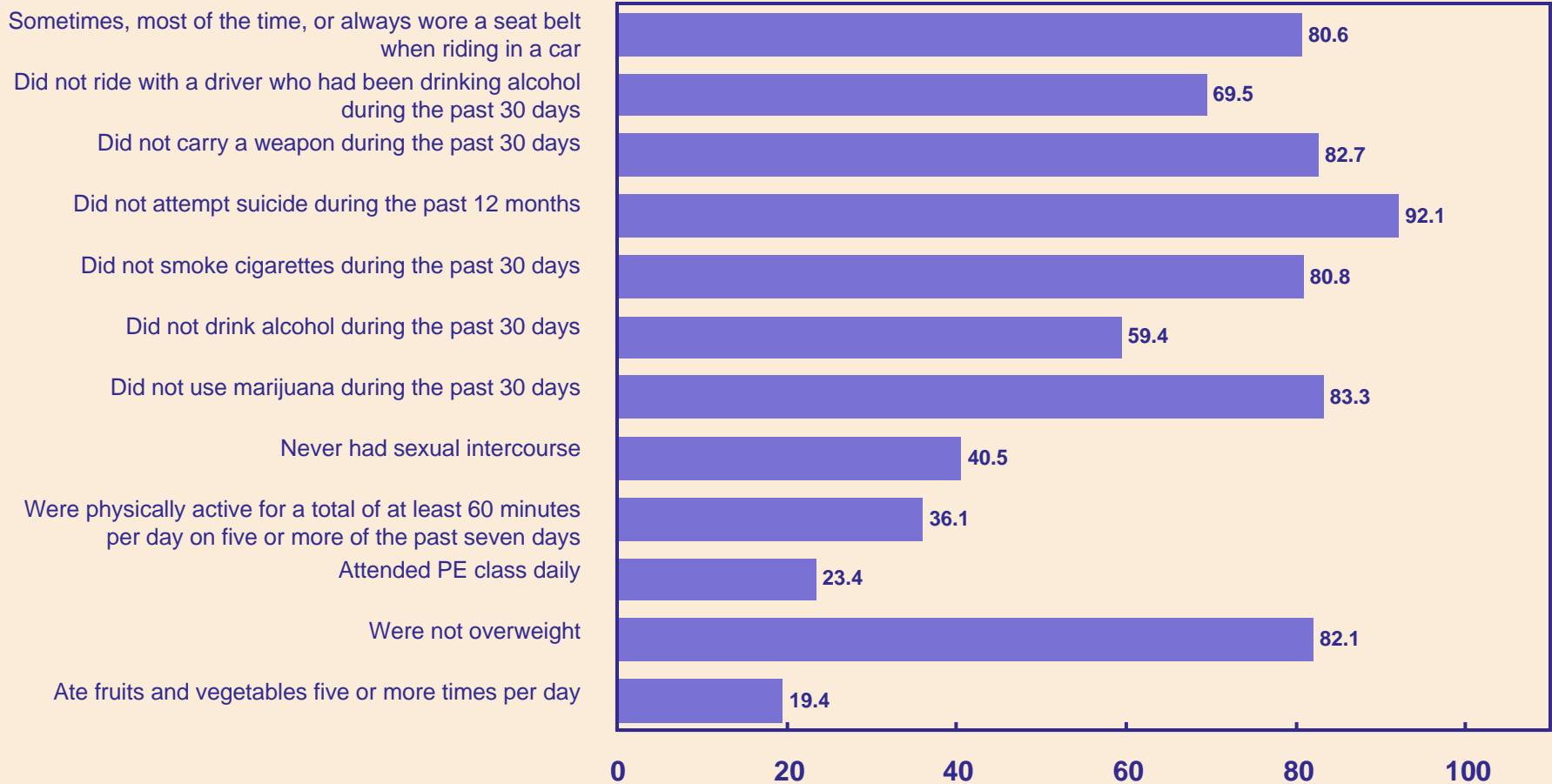


Note: This graph contains weighted results. See the corresponding summary table for detailed explanation of data.

2007 Youth Risk Behavior Survey Results

Mississippi High School Survey Summary Graphs

Percentage of students who:

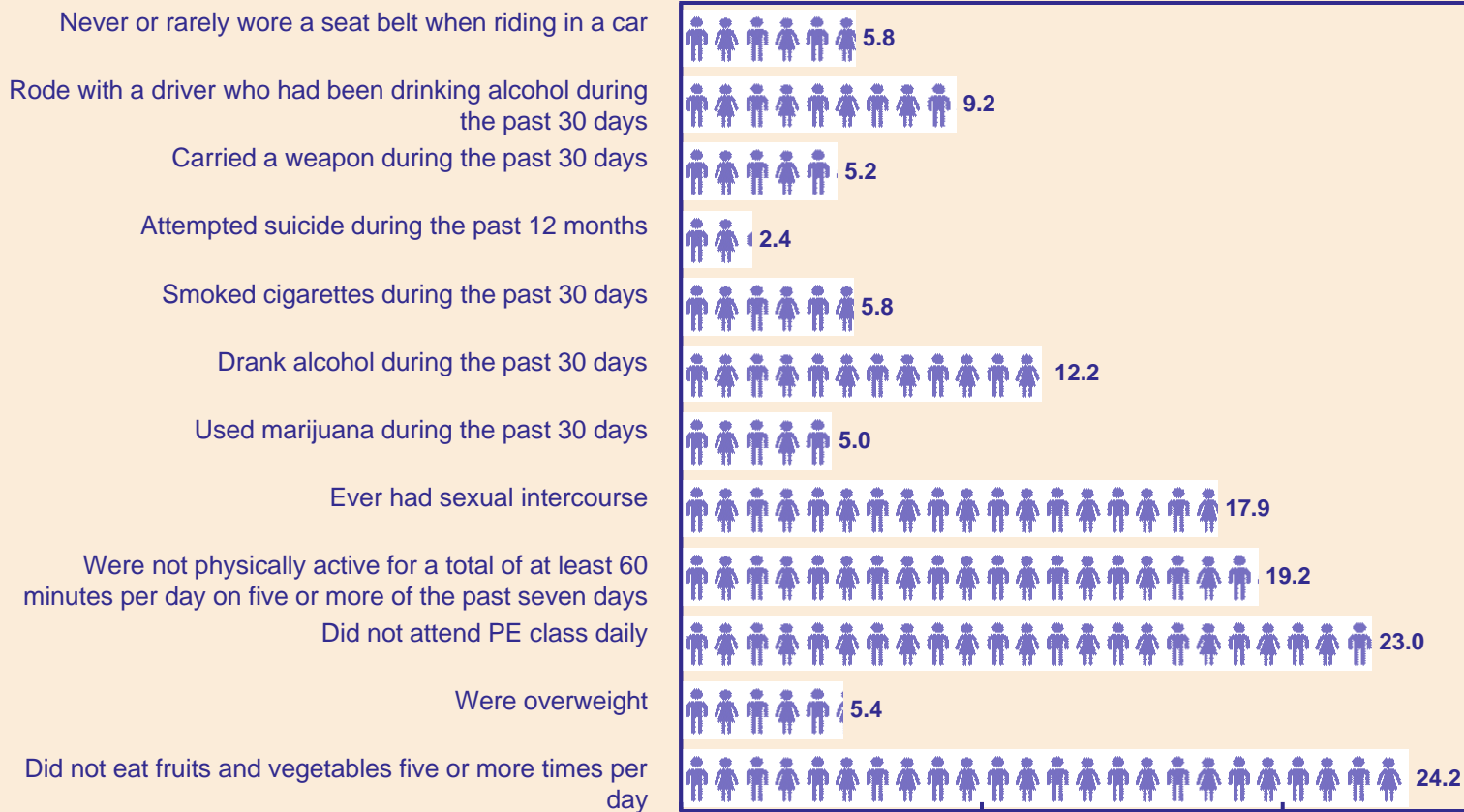


Note: This graph contains weighted results. See the corresponding summary table for detailed explanation of data.

2007 Youth Risk Behavior Survey Results

Mississippi High School Survey Summary Graphs

Number of students in a class of 30 who:



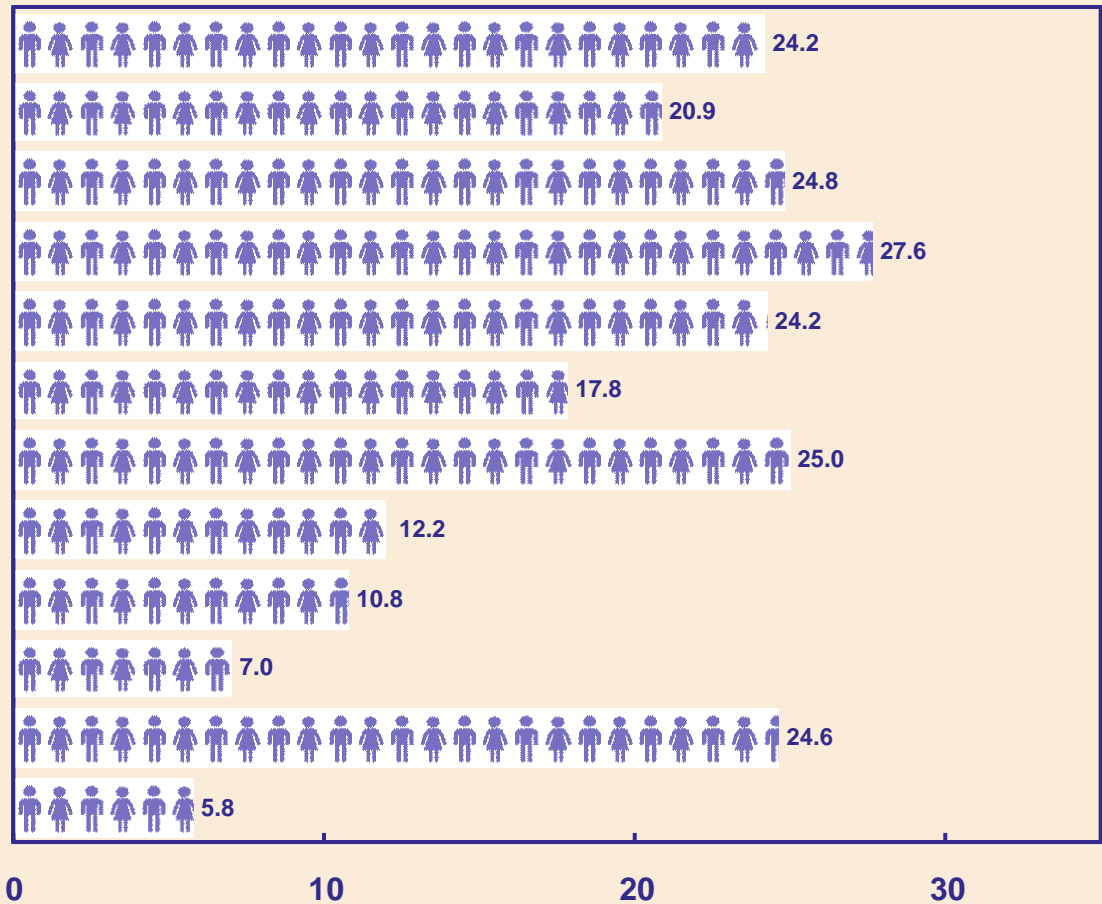
Note: This graph contains weighted results. See the corresponding summary table for detailed explanation of data.

2007 Youth Risk Behavior Survey Results

Mississippi High School Survey Summary Graphs

Number of students in a class of 30 who:

- Sometimes, most of the time, or always wore a seat belt when riding in a car
- Did not ride with a driver who had been drinking alcohol during the past 30 days
- Did not carry a weapon during the past 30 days
- Did not attempt suicide during the past 12 months
- Did not smoke cigarettes during the past 30 days
- Did not drink alcohol during the past 30 days
- Did not use marijuana during the past 30 days
- Never had sexual intercourse
- Were physically active for a total of at least 60 minutes per day on five or more of the past seven days
- Attended PE class daily
- Were not overweight
- Ate fruits and vegetables five or more times per day



Note: This graph contains weighted results. See the corresponding summary table for detailed explanation of data.