

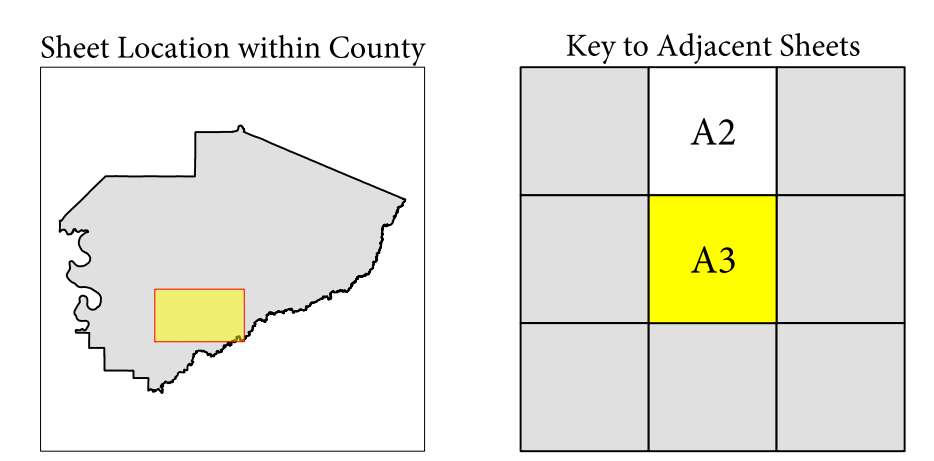
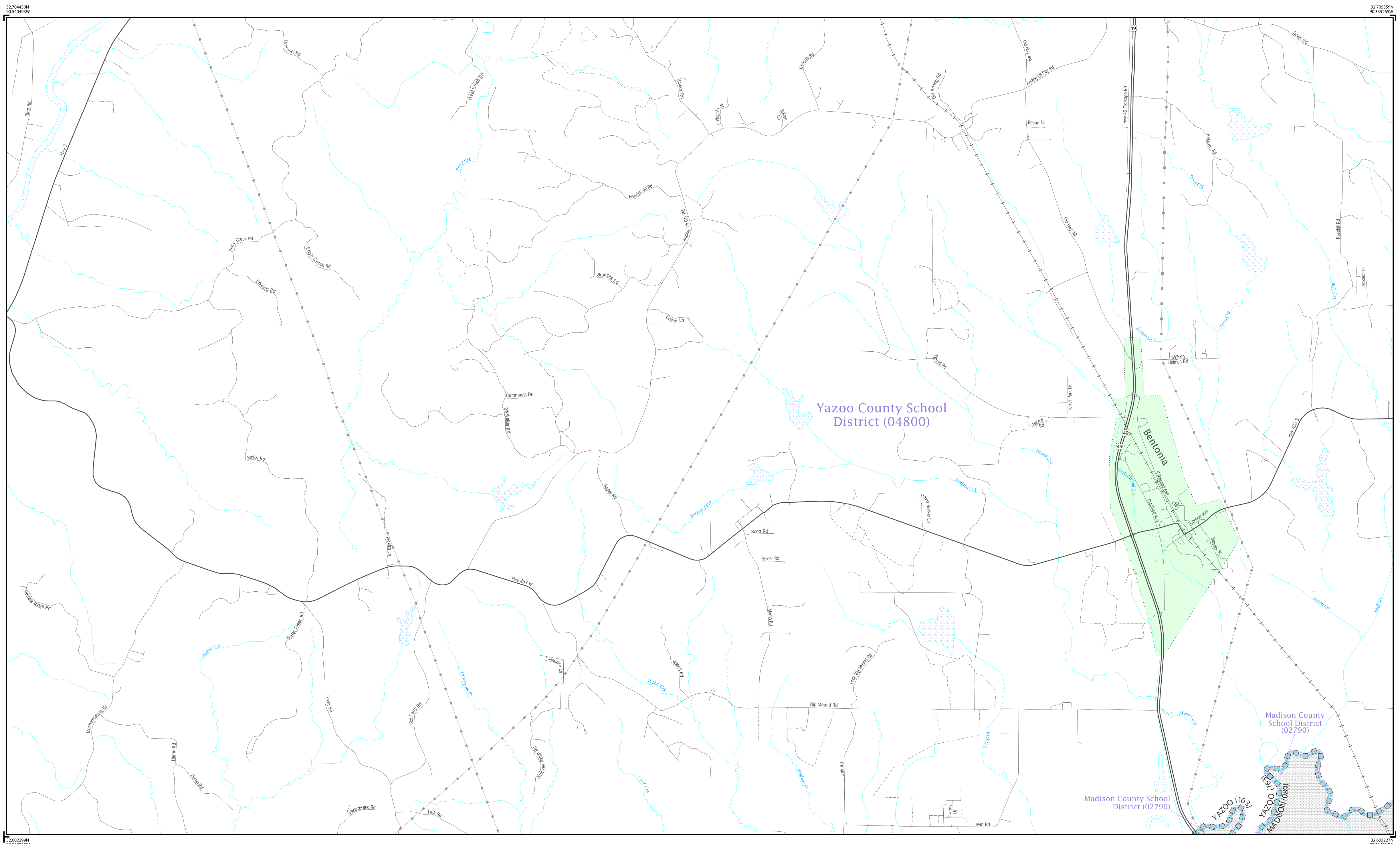
2009-2010 School District Annotation Map (Inset): Yazoo County

LEGEND

SYMBOL	NAME STYLE
	Elementary School District
	Secondary School District
	Unified School District
	AMERICAN INDIAN RESERVATION
	STATE
	COUNTY
	Minor Civil Division (MCD)
	Incorporated Place

	Interstate		Roadway		Notable Boundary
	US Highway		Powerline, Pipeline, or LTB		Stream
	State Highway		Ridge Line or Fence Line		Water Body
	Other Road		Cemetery		Golf Course
	Tail		National Park / Park		Military
	Inset		Out Area		Airport

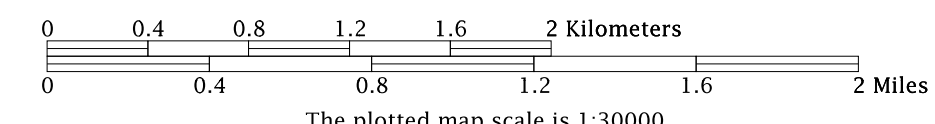
Where state, county, and/or MCD boundaries coincide, the map shows the boundary symbol for only the highest-ranking of these boundaries.



Sheet A3 of 3 INSET sheets
 Total Sheets: 7 (Index 1: Parent 3; Inset 3)
 ST: Mississippi (28)
 COU: Yazoo (163)

All legal boundaries and names are as of January 1, 2009. The boundaries shown on this map are for Census Bureau statistical data collection and tabulation purposes only; their depiction and designation for statistical purposes does not constitute a determination of jurisdictional authority or rights of ownership or entitlement.
 Source: U.S. Census Bureau's MAI/TIGER database (ACS09)
 Created by Geography Division: July 18, 2009
 U.S. DEPARTMENT OF COMMERCE Economics and Statistics Administration U.S. Census Bureau

Projection: Albers Equal Area Conic
 Datum: NAD 83
 Spheroid: CRS 80
 1st Standard Parallel: 30 57 15
 2nd Standard Parallel: 34 11 14
 Central Meridian: 89 52 02
 Latitude of Projection's Origin: 30 08 45
 False Easting: 0
 False Northing: 0



USCENSUSBUREAU

School district boundaries are as of January 1, 2008.

