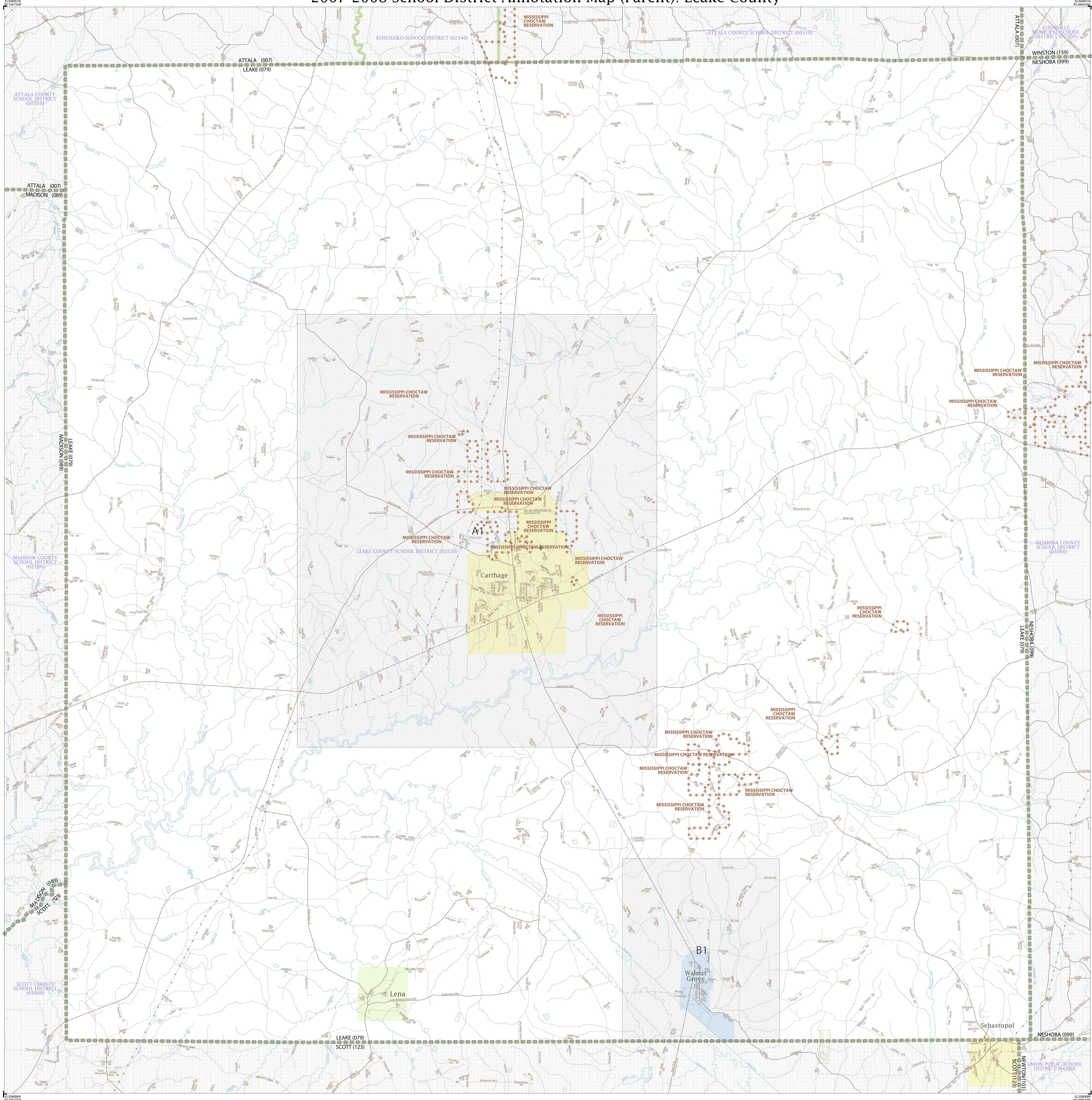


# 2007-2008 School District Annotation Map (Parent): Leake County



### LEGEND

| SYMBOL | NAME/STYLE                  |
|--------|-----------------------------|
|        | ELEMENTARY SCHOOL DISTRICT  |
|        | SECONDARY SCHOOL DISTRICT   |
|        | UNIFIED SCHOOL DISTRICT     |
|        | AMERICAN INDIAN RESERVATION |
|        | STATE                       |
|        | COUNTY                      |
|        | Minor Civil Division (MCD)  |
|        | Incorporated Place          |

### FEATURES

|  |   |  |                             |  |                    |
|--|---|--|-----------------------------|--|--------------------|
|  | Interstate or U.S. Highway                    |  | Road                        |  | Non-tidal Boundary |
|  | State or County Highway                       |  | Pipeline, Powerline, or LRT |  | Stream/Channel     |
|  | Other Road, Trail, Walkway, Boundary or Fence |  | Ridge Line or Fence Line    |  | Watercourse Stream |
|  | Military                                      |  | Comity                      |  | Wetland            |
|  | Golf Course                                   |  | National Park / Park        |  | Water              |
|  | Insect Area                                   |  | Out Area                    |  | Airport            |
|  |   |  |                             |  | Other              |

Where state and county, or state and MCD, boundaries coincide only the state boundaries are shown.

Sheet 1 of 1 PARENT sheets  
Total Sheets: 3 (Index 0; Parent 1; Inset 2)

All legal boundaries and names are as of January 1, 2007. The boundaries shown on this map are for Census Bureau statistical data collection and tabulation purposes only; their depiction and designation for statistical purposes does not constitute a determination of jurisdictional authority or rights of ownership or entitlement.  
Source: U.S. Census Bureau's MA/TIGER database  
Projection: State based, Albers Equal Area ([www.census.gov/geographies/tigerfiles.html](http://www.census.gov/geographies/tigerfiles.html))  
Map created by Geography Division: 05-DEC-07  
U.S. DEPARTMENT OF COMMERCE Economics and Statistics Administration U.S. Census Bureau

