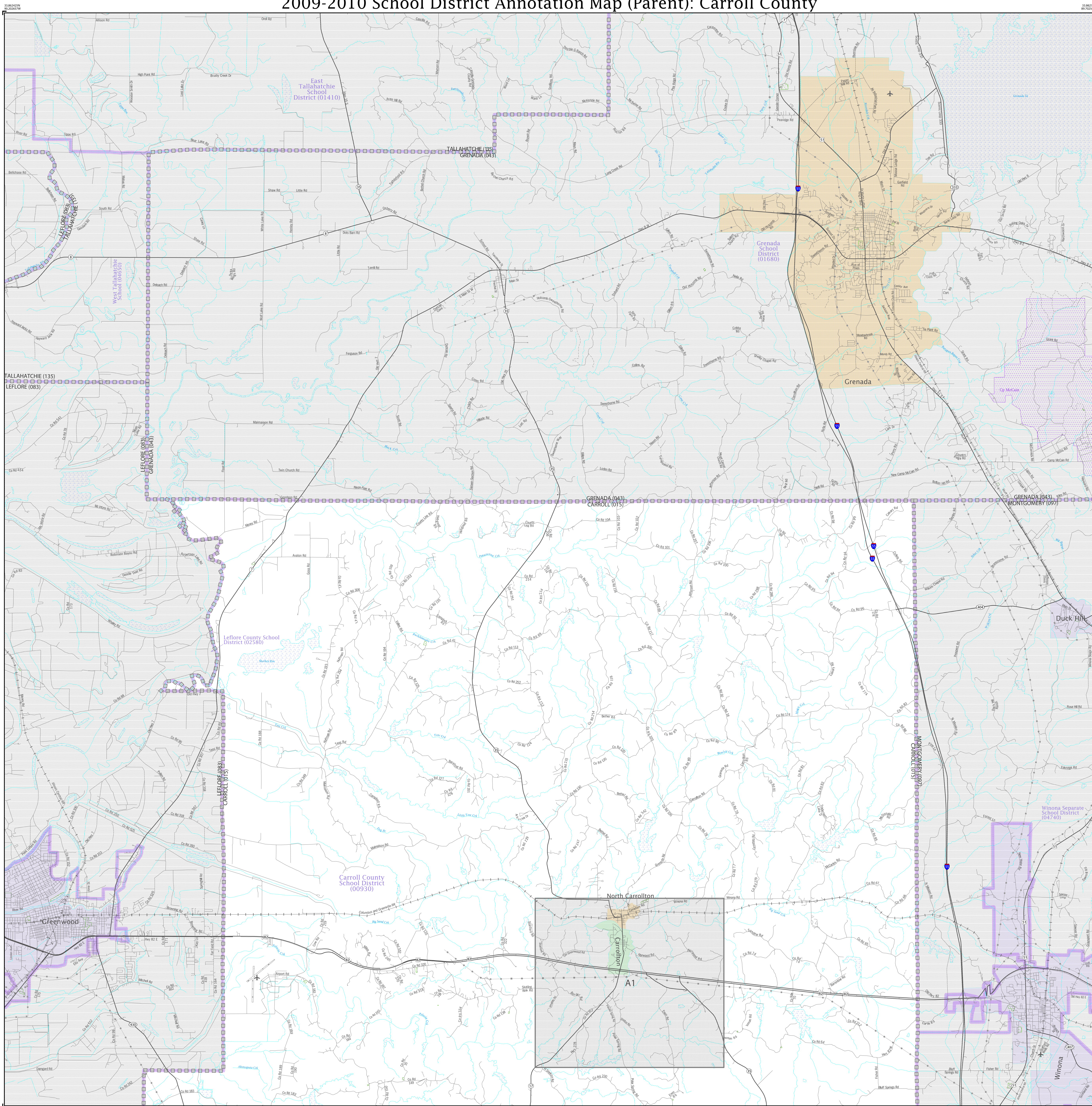


2009-2010 School District Annotation Map (Parent): Carroll County

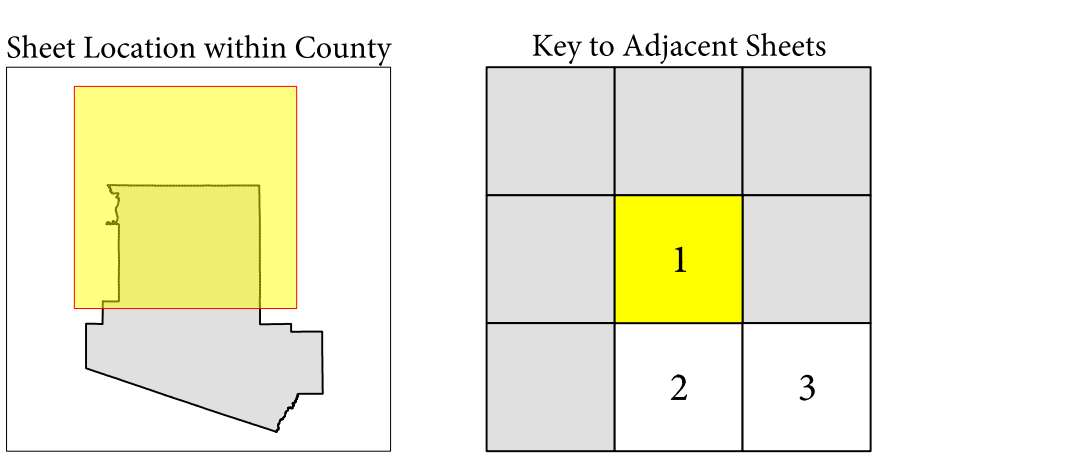


LEGEND

SYMBOL	NAME STYLE
	Elementary School District
	Secondary School District
	Unified School District
	AMERICAN INDIAN RESERVATION
	STATE
	COUNTY
	Minor Civil Division (MCD)
	Incorporated Place

FEATURES	
	Interstate
	US Highway
	State Highway
	Other Road
	Trail
	Railroad
	Powerline, Pipeline, or LTB
	Ridge Line or Fence Line
	Cemetery
	National Park / Park
	Out Area
	Stream
	Year-Side
	Golf Course
	Military
	Airport
	Nonstate Boundary

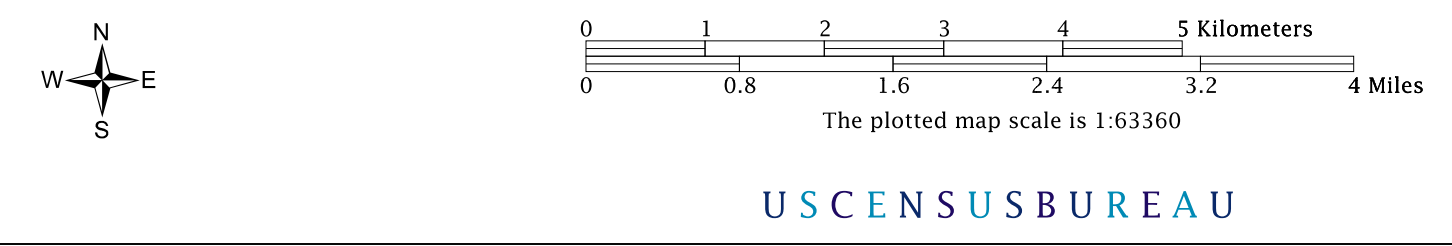
Where state, county, and/or MCD boundaries coincide, the map shows the boundary symbol for only the highest-ranking of these boundaries.



Sheet 1 of 3 PARENT sheets
 Total Sheets: 6 (Index 1; Parent 3; Inset 2)
 ST: Mississippi (28)
 COU: Carroll (015)

All legal boundaries and names are as of January 1, 2009. The boundaries shown on this map are for Census Bureau statistical data collection and tabulation purposes only; their depiction and designation for statistical purposes does not constitute a determination of jurisdictional authority or rights of ownership or entitlement.
 Source: U.S. Census Bureau's MAI/TIGER database (ACS09)
 Created by Geography Division: July 16, 2009
 U.S. DEPARTMENT OF COMMERCE Economics and Statistics Administration U.S. Census Bureau

Projection: Albers Equal Area Conic
 Datum: NAD 83
 Spheroid: GRS 80
 1st Standard Parallel: 30 57 14
 2nd Standard Parallel: 34 11 14
 Central Meridian: 89 52 02
 Latitude of Projection's Origin: 30 08 45
 False Easting: 0
 False Northing: 0



USCENSUSBUREAU

School district boundaries are as of January 1, 2008.

2009-2010 SDA Map
 404628015001